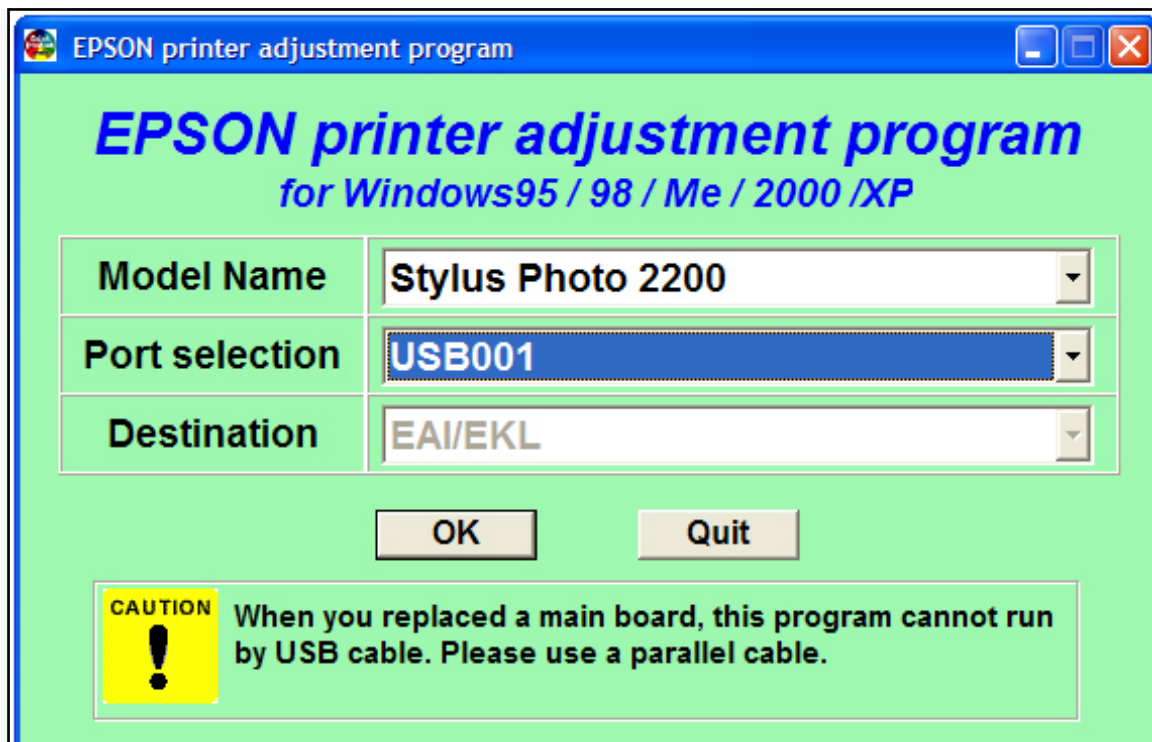


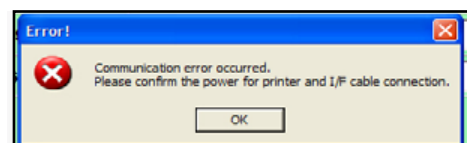
Resetting the Waste Ink Tank on the Fast T-Jet 2 (For Windows XP. See page 3 if using Windows Vista)

Once the Epson 2200 Adjustment Program has been downloaded and installed:

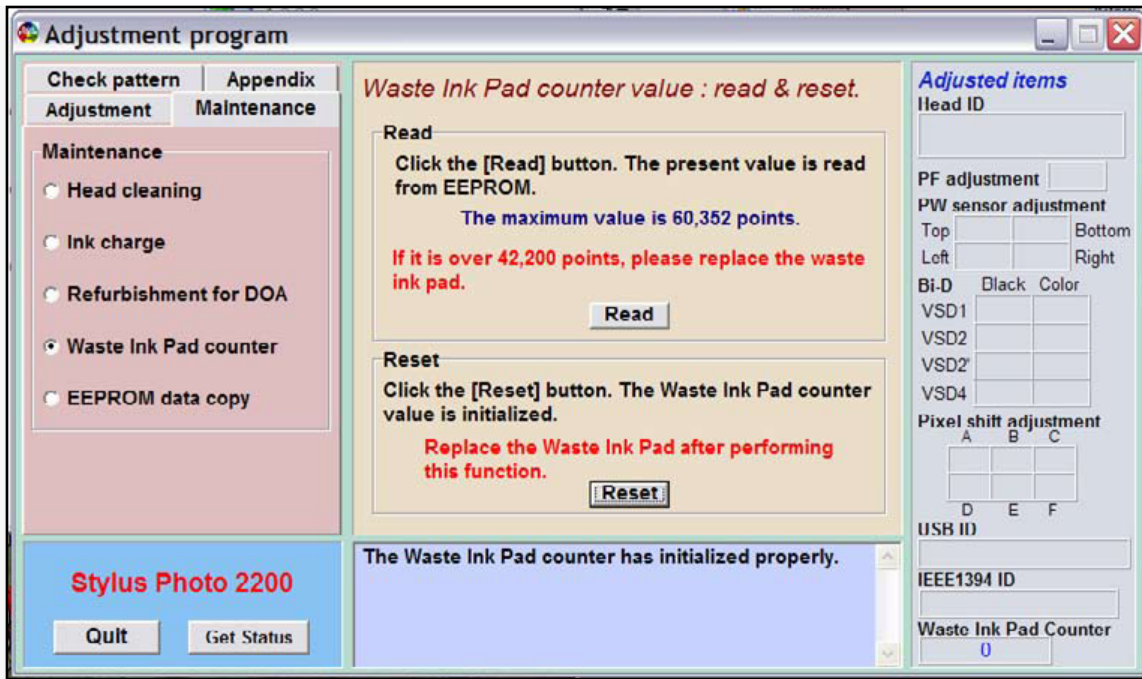
1. Open the Epson folder on the hard drive and navigate to "APSP2100_Ver11". Double-click on the program to run it.
2. A box similar to the one below will appear. Select the model as a Stylus Photo 2200. The port will be the USB port through which the print is connected to the computer. Do not worry about the destination. **MAKE SURE YOU'RE YOUR PRINTER IS ON WHILE RUNNING THIS PROGRAM.**



If you select the wrong Port Selection or your printer is not turn on or plugged into the computer you will receive an error message.



- Click on *Ok* and a new menu will appear. Click on the *Maintenance* tab in the top left, then select *Waste Ink Pad Counter*. Click on *reset* and the message, "Waste ink pad counter has initialized properly" will be displayed. Click on *Quit* twice to exit the program.



- Power OFF the printer let it sit for about 1 to 2 minutes. Turn the printer back ON and resume printing.

*** If you do not know what port your printer is connected to you can go to your Printers and Faxes window and *right-click* on the Epson 2200. Select *Properties* and select the tab that says *Ports*. Here is where port selection information can be found.***

Equipment Zone Support Contact Info:

Technical Support +1 201-797-1504
 Office +1 201-797-1504
 Fax +1 201-797-1505
 Email support@equipmentzone.com
 Internet www.support.equipmentzone.com



Equipment Zone
 17-20 Willow Street
 Fair Lawn, NJ 07410 USA

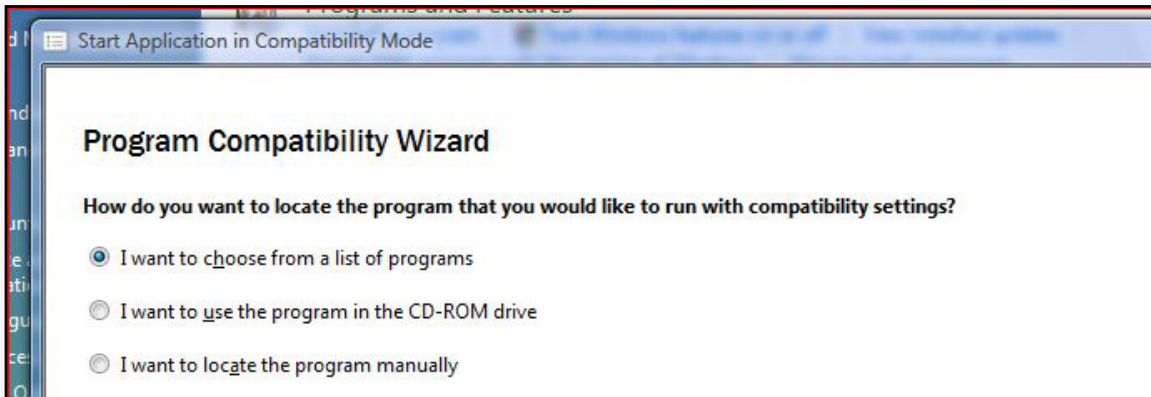
Using the Adjustment Program in Windows Vista

In order to run the adjustment program using Windows Vista OS, you will need to do the following after installing the adjustment program:

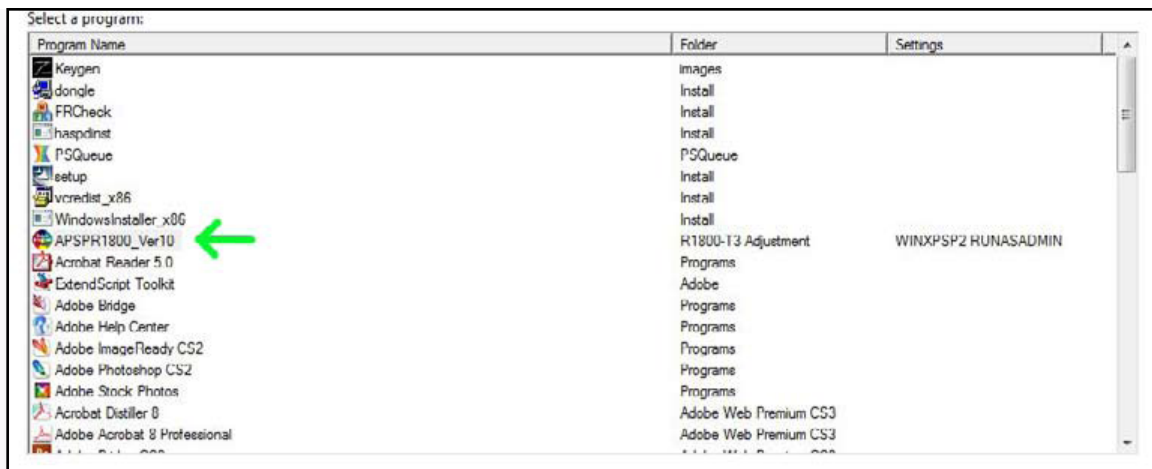
1. Go to the Control Panel and select Programs.
2. Select "Use an older program with this version of windows"



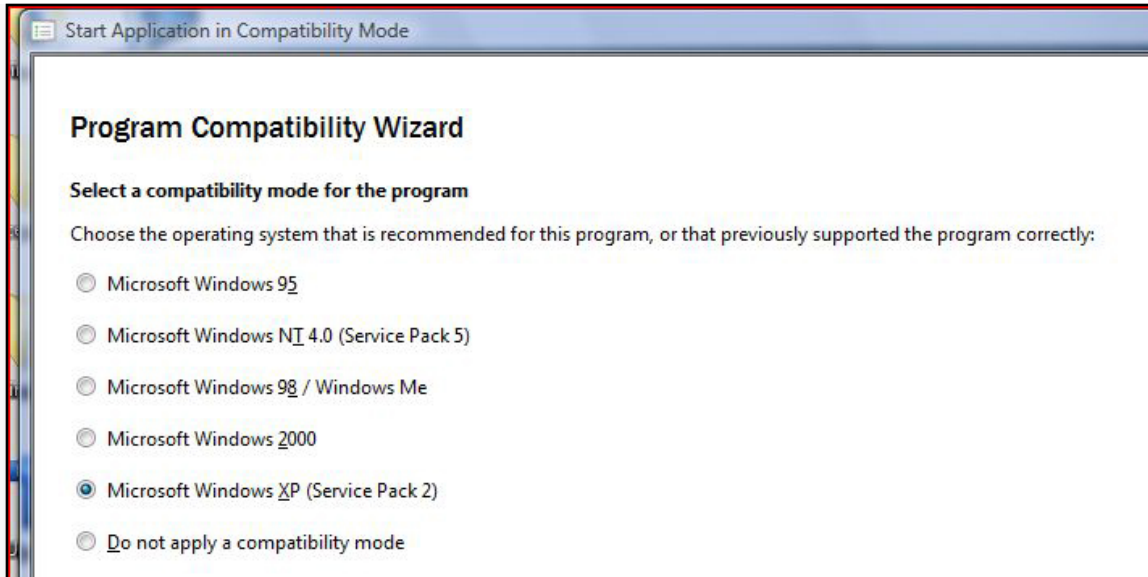
3. A new window will appear. Click on Next.
4. The next screen will ask where to search for the program you wish to run. Choose, "I want to choose from a list of programs."



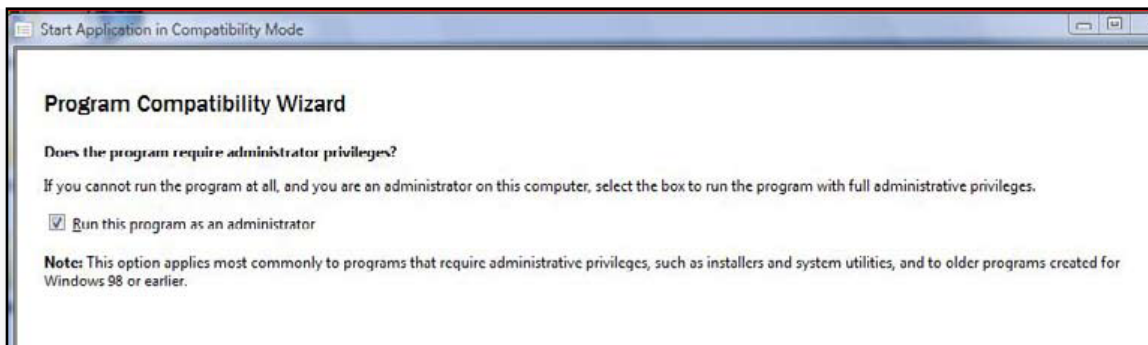
5. The system should now search your computer for a list of all the programs on it. Once it is done it will allow you to select one.



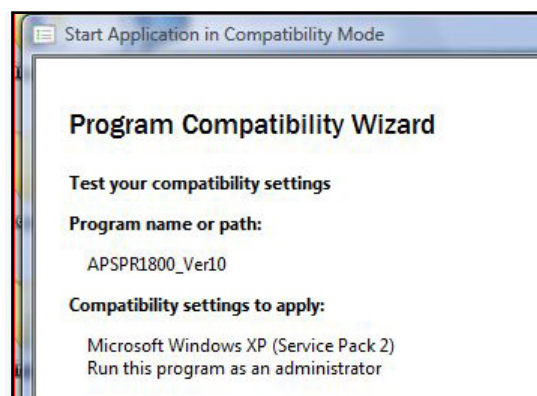
6. Select APSPR1800 Version 10 from the list of options and click on *Next*.
7. Choose the package version to use which will be Microsoft Windows XP (Service Pack 2). Click on *Next*.



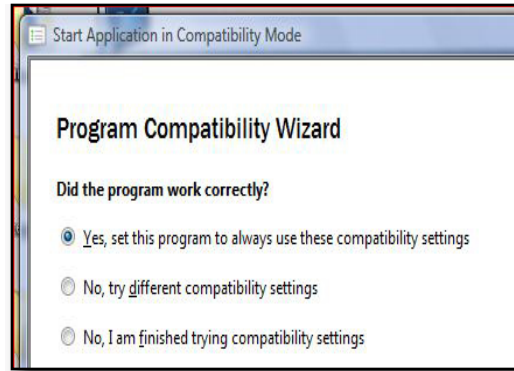
8. Do NOT check any boxes on the next screen. Click on *Next* and proceed.
9. Place a check in the box to run this program as an administrator. Click on *Next*.



10. The screen that appears should display all these settings. If it does not, change the setting that is wrong. If everything is correct, click on *Next*.



11. Test the program to ensure it will run under the new settings. If it is working, this box will appear on the screen. Select the Yes option and click on *Next*.



12. The last screen will confirm the compatibility setting for this program has been successfully adjusted. Click on *Finished* and the program can be executed.

